

**THE**  
**PINK SHED**  
B E A U T I C I A N S

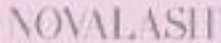
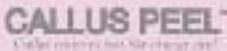
Your rural retreat.

**THE  
PINK SHED**  
BEAUTICIANS

Relax and unwind in our salon based in the beautiful countryside in Brantham, Suffolk. We have 4 stunning treatment rooms as well as 3 nail stations and a luxurious area for foot treatments and pedicures. We also have a dedicated spray tan booth for your comfort and convenience. Our experienced team of 8 are all highly trained in all the best treatments and we pride ourselves on using the best and latest beauty brands. Our team all specialise in different treatments, to ensure the highest quality for you.

We have plenty of free parking space and you can enjoy complimentary teas and coffee whilst you are at The Pink Shed. You will be provided with our refreshments menu as you arrive and can choose from delicious pukka herbal teas, high quality coffees and tea.

All pre and post treatment advice is on our website, but do give us a call if you have any questions.



## CONTENTS

Facials	3
Advanced Facials	4
Aesthetic Treatments	7
Brows & Lashes	8
Spray Tan	10
Waxing & Hair Removal	10
Nails, Hands & Feet	11
Massage & Body Treatments	13
Hopi Ear Candling	15
Reflexology	15
Pink Packages	15

*“Such a lovely salon,  
in a beautiful setting too!,,*

---

## ELEMIS TOUCH Anti-Aging Facials

### Pro-Collagen Age Defy ★ Best Seller ★

(Anti-aging, if your concerns are fine lines and wrinkles)

Tackles fine lines and wrinkles with clinically proven age defying benefits. A facial that leaves the skin looking youthful and nourished.

.....60 minutes | £76.00

### Pro-Collagen Definition Lift and Contour

(Anti-aging, if your concerns are sagging jowls and jawlines)

Powered by breakthrough technology targeting sagging jowls, cheeks and jawlines. Products and ingredients that boost the skin's appearance leaving it looking plumper and revitalised, creating a sculpted and youthful effect.

.....60 minutes | £76.00

### Dynamic Resurfacing Precision Peel

(Anti-aging, if your concerns are uneven skin tone)

Clinically proven to target signs of aging and uneven skin tone. A facial that uses layers of enzymes for a deep exfoliation. A new start for a smoother, brighter, younger looking skin.

.....60 minutes | £76.00

*“Flawless appointment -  
from greeting to payment -  
lots of nice touches,,*

Book a course of 5 of any of  
these treatments and receive a  
6th treatment for free with our  
compliments.

## ELEMIS TOUCH Skin Solution Facials

### Superfood Pro-Radiance ★ Best Seller ★

(If your concerns are to brighten dull skin)

A nutritional boost for your skin designed to tackle stressed, dull skin with energising, detoxifying actives. Clinically proven to leave skin plumper, radiant and brighter.

.....60 minutes | £68.00

### Sensitive Skin Soother

(If your concern is sensitivity)

Fragile skin needs special attention. A soothing massage technique helps reduce the appearance of redness and protect against daily tresses. Moisture and texture levels are restored and skin is left feeling soothed, comfortable, and calm.

.....60 minutes | £68.00

### Anti-Blemish Mattify and Calm

(If your concerns are congested or hormonal skin)

A revelation for oily, congested or hormonal skin. This mattifying facial helps combat oil and shine, while the massage helps restore micro-circulation. A deeply detoxifying treatment for clear bright skin.

.....60 minutes | £68.00

### Elemis Mini Taster Facial

A great taster of the Elemis experience, leaving the skin smooth, radiant and hydrated. Includes cleanse, tone, exfoliation, mask, moisturiser, eye serum and scalp massage.

.....30 Minutes | £36.00

### Elemis Teen Facial

A deep cleansing facial to address hormonal teen skin concerns.

.....30 Minutes | £36.00

## ELEMIS BIOTEC ADVANCED FACIALS

### Anti-Ageing

Biotech facials use a combination of the following technologies- Micro-current, Oxygen infusion, Light therapy, Galvanic-current and ultrasonic vibration.

#### BIOTEC Line Eraser ★ Best Seller ★

(If your concerns are lines and wrinkles)

This clinically proven\* facial uses the firming and toning powers of microcurrent pulses to increase skin firmness and elasticity, dramatically reducing depth of fine lines and wrinkles after just one treatment. Red and blue light therapy warms and de-stresses the skin and improves circulation, while a blast of oxygen plumps out fine lines.

.....60 minutes | £86.00

#### BIOTEC Firm-a-Lift

(If your concerns are sagging jowls and jawline)

Lift and contour the complexion with this ground-breaking blend of massage and sculpting galvanic technology. Circulation-stimulating botanicals are activated by microcurrent pulses to target slackening skin, while galvanic currents infuse the skin with hydration and anti-ageing actives.

.....60 minutes | £86.00

#### BIOTEC Anti-Pigment Brightener

(If you concerns are uneven skin tone, age spots and dullness)

Significantly even skin tone, reduce pigmentation, and increase brightness and luminosity. This powerful treatment uses a unique complex of brightening actives, ultrasonic peel and light therapy, combined with gentle massage to help inhibit melanin production and reduce dullness.

.....60 minutes | £86.00

#### BIOTEC Skin Resurfacer

(If your concerns are uneven skin tone)

A revolutionary facial to address skin tone, blemishes and fine lines, transforming skin's texture. An ultrasonic peel reveals a noticeably smoother complexion. Steam and extraction deeply cleanses before massage and light therapy restores equilibrium.

.....60 minutes | £86.00



Book a course of 5 of any of the above treatments  
and receive a 6th treatment for free with our compliments.

---

## ELEMIS BIOTEC ADVANCED FACIALS | Skin Solution

### BIOTEC Radiance Renew ★ **Best Seller** ★ (If your concerns are to brighten dull skin)

A powerful antidote for tired skin, this cellular-boosting treatment targets sluggish complexions. The ultrasonic peel uses vibrational energy to exfoliate, lifting impurities and dead skin cells. A rejuvenating galvanic current harnesses the power of elderberry and orange flower to help restore moisture and vitality.

..... 60 minutes | £78.00

### BIOTEC Blemish Control (If your concerns are congested or hormonal skin)

A deeply cleansing facial for congested skin which uses ultrasonic vibration, massage, steam and galvanic currents to purify, clarify and exfoliate. The powerful anti-blemish activator containing salicylic acid and Iris smoothes and moisturises, while light therapy helps balance and clear the complexion.

..... 60 minutes | £78.00

### BIOTEC Sensitive Skin Soother (If your concerns are sensitivity)

For sensitive skin prone to redness, this anti-inflammatory facial offers comfort and balance. Using an activator rich in frankincense and naturally calming willowherb, skin is infused with oxygen to encourage good cellular function. Red light therapy and calming anti-oxidants improve cell communication, supporting the skin's natural ability to repair and regenerate.

..... 60 minutes | £78.00

### BIOTEC Taster Facial

Choose one of the BIOTEC facials above and have a 30 minute taster..... 30 minutes | £46.00

### Add-on BIOTEC Eye Treatment

*Elemis BIOTEC technology gently stimulates and tightens the delicate skin around the eye.*

*The appearance of puffiness and dark circles is reduced, leaving eyes looking wide-awake..... 30 Minutes | £40.00*

### Add-on BIOTEC Neck Treatment

*A targeted, toning treatment using microcurrent to remind the muscle to firm up,*

*whilst a jowl and chin mask lifts and tightens..... 30 Minutes | £40.00*

### Add-on Massage

*Why not upgrade your BIOTEC facial to include a 15 minute hand and arm massage, scalp or neck and shoulder massage. This can only be booked with a BIOTEC facial and not booked as a standalone treatment..... 15 minutes | £10.00*

### Add-on a Lay In

*For those that aren't quiet ready for getting off the bed and stepping back into reality. Why not add a 15 minute lay In to your treatment and relax on the heated bed listening to the calming music..... 15 minutes | £10.00*

Book a course of 5 of any of the above treatments  
and receive a 6th treatment for free with our compliments.

---

## ADVANCED FACIAL TREATMENTS | Skin Solution

### Dermalux Light Therapy Facial ★ **New Treatment**★

Dermalux LED Phototherapy is a non-invasive treatment that uses clinically proven therapeutic light energy to trigger the skin's natural rejuvenation and repair processes without pain or downtime. From the first treatment, Dermalux instantly boosts the complexion to restore vitality and glow. A treatment course offers cumulative benefits and can be targeted to specific skin concerns for the face and body with lasting and visible improvement.

LED light therapy skin treatment ..... 45 minutes | £45.00

### Boost your skin treatment

Add light therapy to ANY facial to accelerate results of your skin treatment even further. .... 15 minutes | £18.00

### Dermaplaning Facial ★ **New Treatment**★

Dermaplaning promotes the growth of new skin cells by scraping and removing the old ones away, it also removes all your fine hairs often referred to as peach fuzz. Skincare products penetrate the skin far better after dermaplaning and it improves their results leaving your skin brighter, and healthier giving you that "baby smooth" look and feel.

Essential Dermaplaning – Includes cleanse, tone, dermaplaning, hydra-gel mask and serum..... 30 minutes | £35.00

Or  
Add Dermaplaning onto any of our Elemis facials for just ..... £25.00

### Red LED light therapy benefits

- Stimulates collagen and increases hydration levels
- Evens skin tone and texture
- Reduces pigmentation
- Shrinks pores and sebaceous glands
- Stimulates circulation & lymphatic system
- Accelerates skin repair.

### Blue LED light therapy benefits

- Powerful anti-bacterial treatment
- Treats all grades of acne without irritation
- Reduces oil production
- Prevents future breakouts
- UV free alternative for eczema and psoriasis
- Anti-inflammatory / cooling effect

### Near infrared LED light therapy benefits

- Advanced skin rejuvenation
- Calms redness and inflammation
- Reduces hyper pigmentation
- Promotes integrity and healthy skin
- Accelerates post treatment healing
- Ideal for the most sensitive skin

---

### Micro-Needling ★ **New Treatment**★

Micro-needling is a non surgical skin regeneration procedure that significantly improves the appearance of fine lines, wrinkles, uneven skin tone and acne scarring. Micro-needling creates hundreds of microscopic channels in the skin's epidermal/ dermal junction, allowing the topical infusion of powerful skin rejuvenation ingredients to be driven into the skin. This amazing treatment encourages collagen and elastin production within the skin giving a more youthful appearance and leaving the skin feeling smoother, brighter and healthier looking. This treatment is perfect for targeting acne scarring, pigmentation, fine lines & wrinkles.

..... 60 minutes | £98.00

### Skin Peels ★ **Coming Soon** ★

Chemical skin peels are professional-grade exfoliating acids applied to the skin to help resurface and retexture, they can significantly reduce the appearance of wrinkles, pigmentation and blemishes.

Book a course of 5 of any of the above treatments  
and receive a 6th treatment for free with our compliments.

---

## AESTHETIC TREATMENTS

Once a month we run a skin clinic with Dr Yash. Yash has over 20 years GP service and offers the following face and body treatments.

### Aqualyx Fat Dissolving Injections

Aqualyx® is a non-surgical solution to minimize and remove stubborn localized pockets of fat. It is ideal for those who exercise regularly and maintain a healthy diet but have pockets of fat that won't shift, even with focused exercise. Fat dissolving Injections are charged per session: You may require 1 to 5 sessions depending on the area and amount of fat.

*Areas that can be treated:*

*Double chin £350, love handles £450, lower tummy £550.*

*The price is per treatment*

..... 15-30 minutes | starting from £350

### Anti Wrinkle Injections

We desire to look and feel the very best we can on a daily basis. Whilst our advance facials give excellent results, if you are wanting to take your skincare to the next level Dr Yash will help you do so.

The areas we can treat: Frown Lines , Crows feet, Forehead lines, Bunny Lines, Turkey neck/ Platysmal bands / Nefertiti neck Lift, Downturned mouth, Gummy Smile, Vertical Lips lines or Smokers line, Masseter reduction/ teeth grinding.

*One Area £175, Two Areas £225, Three Areas £275*

..... 15-30 minutes | starting from £175

### Hyperhidrosis

This treatment is for excess sweating of the underarms, palms or feet.

..... 15-30 minutes | starting from £400

*Underarms £400, Feet or Palms £450.*

### Dermal Fillers

Plump up fine lines and augment the lips and cheeks by restoring volume and definition.

..... 20-40 minutes | starting from £110

*0.5ml £110, 1ml £220, 2ml £380, Tear Trough Fillers £400*

### PDO Threads

PDO Threads are used for non-surgical facial treatments. This minimally invasive procedure uses dissolvable PDO (Polydioxanone) threads to stimulate new collagen production, reducing fine lines, reducing open pores and creating volume. The effects last for up to 2 years and the procedure has minimal down time. Areas used for include cheek, jawline, forehead and neck, sagging chin, jawline, cheeks or neck fine line reduction, skin revitalisation, body contouring (stomach, above knees).

..... 30 minutes | starting from £100

*Pricing is £100 per thread.*

### Profhilo

Profhilo is an award winning product that helps with improving skin quality, hydration and firmness as well as encouraging natural production of collagen. It is an effective and natural looking non-surgical face lift treatment. Made of 100% Hyaluronic Acid it nourishes dermal cells and restores firmness of the skin. This treatment will hydrate your skin from inside out. Skin condition can be visibly improved after just 2 sessions, with a 1 month interval and only 5 injection points on each side of the face. This treatment can help to: Increase firmness and elasticity, tighten and lift skin, improve skin tone and texture, re-hydrate skin and restore radiance.

..... 30 minutes | starting from £275

*Profhilo First Session £500 ( this includes your second session), Profhilo One Treatment £275*

### Cryotherapy

The CryoPen™ uses liquefied N2O to deliver quick, effective cryotherapy treatments to benign skin lesions. The nitrous oxide destroys tissues by freezing.

This serves as a treatment for: Age spots, Warts, Skin tags, Verrucae, Liver spots

..... 15-30 minutes | starting from £50

*£50 for one removal and £15 to remove each one after that.*

---

## BROWS | Perfection

### HD Brows *\*A patch test will be required at least 48 hours prior to this treatment*

HD Brows are a unique and revolutionary 7 step brow-shaping treatment giving you the ultimate in well groomed, high definition eyebrows. This isn't just shaping and tidying – The HD brows procedure is eyebrow artistry!

..... 35-45 minutes | £36.00

### HD Brow Sculpt **★ Best Seller ★** *\*A patch test will be required at least 48 hours prior to this treatment*

HD brow sculpt (sometimes referred to as brow lamination) tames unruly or downward growing eyebrows to sit in a desired position, or can give you a fuller, fluffy brow if you desire.

..... 45-55 minutes | £39.00

### The Ultimate HD Experience *\*A patch test will be required at least 48 hours prior to this treatment*

Combine your HD brow treatment with HD sculpt for brow perfection

..... 55-65 minutes | £60.00

### Eyebrow Tweeze

Eyebrow shape with tweezers to achieve a defined brow..... 10-15 minutes | £10.00

### Eyebrow Tint *\*A patch test will be required at least 24 hours prior to this treatment.*

The eyebrows frame the face so it is important that they are clearly defined.

A tint will enhance the natural shape..... 10-15 minutes | £10.00

### Eyebrow Wax

An eyebrow wax removes not only the more stubborn hairs but the finer ones that are not always visible giving you the perfect finish. We will also use tweezers within this treatment if we think necessary to

achieve a perfect shape..... 10-15 minutes | £11.00

### Eyebrow Wax and Tint *\*A patch test will be required at least 24 hours prior to this treatment.*

Why not have the complete brow look and combine a brow wax and tint..... 20 minutes | £19.00

### Eyebrow Threading

Removes short rows of hair with thread to achieve a defined brow..... 10-15 minutes | £12.00

---

## LASHES | All About The Eyes

### Lash Tint *\*A patch test will be required at least 24 hours prior to this treatment.*

Adding colour to the lashes creates definition which opens up the eye..... 15 minutes | £15.00

### LVL Lash Lift *\*A patch test will be required at least 24 hours prior to this treatment.*

LVL (Length, Volume and Lift) lashes achieve beautiful results without the need for extensions, using only your natural lash. The treatment works by darkening, lengthening and lifting the natural lash. Whether your lashes are short, medium or long in length, the LVL treatment creates a beautiful finish. LVL treatments take approximately one hour and the results can last for up to 8 weeks dependent on the length and quality of your natural lashes.....

60 minutes | £52.00



---

## Multi-Award Winning Lash Therapists

### NOVALASH Classic Individual Lashes ★ **Best Seller** ★ *\*Glue test required at least 24 hours before appointment time*

This treatment is designed to give noticeable thicker and longer lashes. Individual, ultra-fine lash extensions are professionally applied and bonded to the clients natural lashes. As you would expect, the lash extensions that we use are of the very highest quality. A combination of high quality synthetic materials create an extension that's shiny and glossy yet perfectly shaped and curved just like a natural lash. NOVALASHES are oil proof and instantly waterproof making them far superior to any other form of classic lashes available..... 120 minutes | £75.00

### Novalash Eyelash Infills

Individual semi-permanent lash infill involves putting synthetic lashes on your new natural eyelashes that have come through from 2-4 weeks ago, as naturally our eyelashes shed and new growth appears.

45 minute NOVALASH Eyelash Infill..... 45 minutes | £36.00  
60 minute NOVALASH Eyelash Infill..... 60 minutes | £44.00  
75 minute NOVALASH Eyelash Infill..... 75 minutes | £52.00

### Russian Eyelash Extensions *\*Glue test required at least 24 hours before appointment time*

This treatment creates volume, longer and more abundant looking eyelashes. The look is created through the application of 2-8 fanned eyelash extensions to each individual natural eyelash. The lashes come in a range of widths and length to create the perfect look..... 120 minutes | £90.00

### Russian Eyelash Infills

Russian semi-permanent eyelash infill involves putting synthetic lashes on your new natural eyelashes that have come through from 3-4 weeks ago, as naturally our eyelashes shed and new growth appears.

45 minute Russian Eyelash Infill..... 45 minutes | £44.00  
60 minute Russian Eyelash Infill..... 60 minutes | £55.00  
75 minute Russian Eyelash Infill..... 75 minutes | £66.00

### NOVALASH American Volume Eyelash Extensions *\*Glue test required at least 24 hours before appointment time*

American volume eyelash create beautiful, full, feathery volume the American way with varying lengths, textures and durability. A very glamorous look. NOVALASHES are oil proof and instantly waterproof making them far superior to any other form of volume lashes available..... 120 minutes | £95.00

### NOVALASH American Volume Eyelash Infill

American semi-permanent eyelash infill involves putting synthetic lashes on your new natural eyelashes that have come through from 3-4 weeks ago, as naturally our eyelashes shed and new growth appears.

45 minute NOVALASH American Volume Eyelash Infill..... 45 minutes | £46.00  
60 minute NOVALASH American Volume Eyelash Infill..... 60 minutes | £58.00  
75 minute NOVALASH American Volume Eyelash Infill..... 75 minutes | £68.00

### Party/Cluster Lashes *\*Glue test required at least 24 hours before appointment time.*

Clusters of lashes placed onto the lash line, perfect for an occasion and last up to 7 days.

We do recommend booking in for the removal of these lashes..... 30 minutes | £29.00

Removal of Synthetic Lashes..... 30 minutes | £22.00

---

## SPRAY TAN | Perfectly Bronzed

### Full Body Sienna X Spray Tan

Sienna X tan provides a natural looking tan, it comes in 3 different shades which complement all skin tones. We can get to all the hard to reach areas!.....20 minutes | £30.00

### Full Body Sienna X Rapid Developing Tan ★ Best Seller ★

Sienna X rapid hour tan is revolutionary! No more sleeping in your tan or spending the day in your baggy dark clothing, with this tan you can shower as soon as 1 hour after the spray tan. The tan will then start to develop 4 hours after the spray tan despite showering it off and you will be left with a beautiful natural looking tan. We advise keeping it on for 1 hour for a light glow, 2 hours for a medium glow and 3 hours for a deep glow.....20 minutes | £35.00

---

## WAXING | Heavenly Hair Free

### Strip Wax

Full Leg.....30-40 minutes | £28.00  
¾ Leg.....20-25 minutes | £25.00  
½ Leg.....15-20 minutes | £22.00  
½ Arm.....15 minutes | £22.00  
Full Arm.....25 minutes | £25.00

### Hot Wax ★ Best Seller ★

Lycan Hot Wax removes hairs as short as 1mm, there is a 50% reduction in sensation and less redness. An eyebrow wax removes not only the more stubborn hairs but the finer ones that are not always visible giving you the perfect finish.

Underarm wax.....10 minutes | £12.00  
Lip Wax.....10 minutes | £11.00  
Chin Wax.....10 minutes | £11.00  
Lip & Chin Wax.....15-20 minutes | £16.50  
Nostril Wax.....10 minutes | £8.00  
Sides of Face.....15 minutes | £13.00  
Lip Chin & Sides of Face.....20 minutes | £22.00  
Toes .....10 minutes | £10.00  
Basic Bikini (outside a brief Knicker Line).....10 minutes | £18.00  
High Bikini (in at the sides).....20 minutes | £23.00  
Brazilian (strip left).....30-45 minutes | £36.00  
Hollywood (Everything off).....30-45 minutes | £36.00

---

## THREADING | By Hand

Eyebrow.....15 minutes | £12.00  
Upper Lip.....10 minutes | £10.00  
Chin.....10 minutes | £10.00

## NAILS Perfect Hands

### File & Polish

Includes a trim, file, shape and polish to finish  
.....15-20 minutes | £18.00

### File, Polish & Cuticles

Includes a trim, file, shape, cuticle push back and polish to finish  
..... 20- 25 minutes | £20.00

### Manicure ★ Best Seller ★

Includes a soak, trim, file and shape of nails, cuticle care, massage and polish to finish  
..... 40-45 minutes | £28.00

### Luxury Manicure

Includes a soak, trim, file and shape of the nails, cuticle care, scrub, mask, massage and polish to finish.  
..... 55-60 minutes | £38.00

### Elemis Elite Manicure

Pamper your hands with this truly indulgent manicure. Your hands are soaked in frangipani infused warm water whilst papaya enzyme peel is applied to your cuticles. Your nails are trimmed and shaped. Frangipani scrub is then massaged into your hands to give a radiant glow. A conditioning mask is then applied and heated mitts are placed on. A hand and arm massage with Frangipani warm oil is then performed leaving your skin feeling completely hydrated. This treatment includes a polish to finish  
..... 55-60 minutes | £48.00

*We use Vinylux weekly polish. It dries within 8 minutes and is more hardwearing*

*“I can’t recommend  
The Pink Shed enough”*

## GEL NAILS The Gel Bottle

Want something a bit tougher than normal polish? Then Gel polish is the way forward. The Gel Bottle is fantastic and lasts for up to three weeks chip free. It’s instantly dry and has a beautiful high gloss finish.

### Express Gel Manicure

Includes a trim, file, shape and Gel polish finish  
..... 30-45 minutes | £31.00

### Gel Manicure

Includes a hand soak, cuticle care, trim, file, shape, hand massage and Gel polish finish  
..... 55-60 minutes | £41.00

### Soak off and Re-apply

Includes a soak off of previous gel polish, a trim, file and shape and the reapplication of fresh Gel polish  
..... 45-60 minutes | £39.00

### Express Gel Pedicure

Includes a trim, file, shape and Gel polish finish .  
.....20-30 minutes | £31.00

### Gel Pedicure

Includes a foot soak, cuticle work, trim, file and shape, foot massage and gel polish finish  
..... 55-60 minutes | £41.00

### Luxury Gel Pedicure

Includes a foot soak, cuticle work, trim, file and shape, exfoliation, foot mask, massage and Gel polish finish  
..... 65-70 minutes | £50.00

Soak off Pink Shed Gel Polish  
.....15-20 minutes | £12.00

Soak off Gel Polish that has been applied elsewhere  
..... | £16.00

French Polish add on..... | £4.00

Nail Art add on (price per finger or toe)..... | £1.00

Magpie Glitter add on (price per finger or toe)..... | £0.50

*\*please note when booking: if you have gel polish currently on you will need to book a soak off separately and book a reapply treatment.*

---

## HAND & FOOT TREATMENTS

### IBX Nail Treatments

IBX is the perfect nail treatment for those who suffer with thin, flaky or ridged nails. It is a two part system that penetrates the nail plate, helping with natural nail growth. It can also be used under gels to improve and protect the integrity of the nail plate making them last longer. We recommend a follow up treatment of IBX 2nd treatment at 3 weeks.

IBX 1st Treatment with a File and Shape of the Nails	25-30 minutes		£30.00
IBX 2nd Treatment with a File and Shape of the Nails	15-20 minutes		£24.00
IBX 1st Treatment with a file and shape and Nail Polish to Finish	40-45 minutes		£35.00
IBX 2nd Treatment with a File and Shape of the Nails and Nail Polish to finish	30-35 minutes		£31.00
IBX 1st Treatment with a File and Shape and Gel Polish finish	55-60 minutes		£43.00
IBX 2nd Treatment with a File and Shape and Gel Polish finish	45-50 minutes		£36.00

## CALLUS PEEL Treat Your Feet

### Callus Peel

Callus Peel is a luxury spa foot treatment that removes hard, callused skin leaving your feet feeling soft and revitalised. The treatment process is five stages: Patch, wrapping, scrapping and filing and moisturising

.....25 minutes | £24.00

### Callus Peel with Polish

Complete the look by adding polish to your callus peel treatment. This includes a toenail trim, file and shape

.....40 minutes | £33.00

### Callus Peel with Gel Polish

Add Gel polish to your callus peel treatment so that your toe nails are dry instantly and have a high shine finish 4

..... 5-50 minutes | £46.00

*\*Please note, Callus Peel is not suitable if you are pregnant*

---

## PEDICURES | Perfect Feet

### File and Polish

Includes a trim, file and shape and polish..... 15-20 minutes | £18.00

### File, Cuticle Push Back and Polish

Includes a trim, file and shape, a push back of cuticles and polish to finish..... 20-25 minutes | £20.00

### Mini Pedicure

Includes a foot soak, trim, file and shape of the nails, cuticle care, massage and polish finish..... 40-45 minutes | £31.00

### Luxury Pedicure

Includes a foot soak, trim, file and shape of the nails, cuticle care, exfoliation, foot mask, massage and polish finish..... 55-60 minutes | £38.00

### Elemis Elite Pedicure

Pamper your feet with this truly indulgent pedicure. Your feet are soaked in frangipani infused warm water whilst papaya enzyme cream is applied to your cuticles and your heels are buffed beautiful. Your nails are trimmed and filed. Frangipani scrub is then massaged into your feet to give a radiant glow. A conditioning mask is then applied and heated booties are placed on. A foot and leg massage with warm frangipani oil is then performed leaving your skin feeling completely hydrated. This treatment includes a polish to finish..... 55-60 minutes | £48.00

---

## MASSAGE TREATMENTS | Relax & Unwind

### Elemis Deep Tissue Freestyle Massage

This is a vigorous work out for the body, perfect to alleviate high stress levels. Tailored entirely to your needs, it leaves you feeling grounded and focused. Your therapist will select an aromatic oil according to your concerns, be they muscle pain or the need for stress relief, relaxation or emotional balance. Skin is prepped to release toxins and the flowing massage works deeper and deeper into the tension, encouraging optimum circulation. As effective as a 30 or 60 minutes stretching, but so much more nurturing.

Full Body .....	60 minutes	£64.00
Back Neck & Shoulder .....	30 minutes	£46.00

### Rocks of the Earth ★ Best Seller ★

Drift into a deep sense of relaxation while the hot stones work wonders into your muscles relieving built up tension & stress. The heat increases circulation and stimulates the lymphatic system revitalising the mind, body & soul.

Full Body Massage.....	60 minutes	£60.00
Back Neck & Shoulder.....	30 minutes	£40.00

### Floating on The Clouds

Swedish massage techniques are used relax the entire body. This is accomplished by rubbing the muscles with long gliding strokes in the direction of blood returning to the heart. But this massage goes beyond relaxation it is exceptionally beneficial for increasing the level of oxygen in the blood, decreasing muscle toxins, improving circulation and flexibility while easing tension.

Full Body and Scalp.....	75 minutes	£70.00
Full Body.....	60 minutes	£58.00
Back Neck and shoulder.....	30 minutes	£35.00

### Elemis Garden of England Rose Restore

Take a walk in an English rose garden with this lavishly hydrating massage. The unique trio of Rose, Camellina and Poppy seed oils maintain and restore elasticity, whilst encouraging skin renewal. The skin is anointed with nourishing oils whilst a nurturing Rose balm and bespoke massage comfort the skin and ground the spirit. Skin is left exquisitely moisturised, intensely supple and delicately scented.

.....	60 minutes	£68.00
-------	------------	--------

### Baby Onboard

Treat yourself & bump. Soothing gentle massage suited to your individual needs in the second or third trimester. Whilst helping to adapt to new changes and hormonal shifts, it relaxes muscle tension and balances fluid levels. This specialised massage promotes rest and reduces any anxieties, enabling the focus of energies to be gathered for the happy event. Please advise which trimester at the time of booking (unsuitable in the first trimester).

Full Body.....	60 minutes	£62.00
Back Neck and Shoulder.....	30 minutes	£38.00

*“I had a neck, back and shoulder massage -wow!  
Everything from start to finish was just perfect!,,*

---

## Head in Heaven

A deeply relaxing treatment which uses gentle head massage to alleviate stress and tension throughout the body. A heavenly massage using the best aromatherapy oils; you'll leave the salon feeling relaxed and as if you're floating on air.

Head, back, neck and shoulders..... 45 minutes | £45.00  
Head..... 30 minutes | £35.00

## Elemis Sole Delight

Treat your feet to this truly luxurious foot treatment. Your feet are cleansed with warm lime mitts. Soothing muscle active body concentrate is massaged into your feet and lower leg, hot stones are then used to massage the soles of your feet to gently tease out tension. A conditioning mask is then applied whilst you are treated to a scalp massage. This treatment will leave you feeling like you are walking on a cloud.

..... 45 minutes | £45.00

## Targeted Toning Tightener

Tightening and toning are the pillars of this treatment. A powerful blend of salts, minerals and seaweeds work together to target cellulite and poor skin tone on the hips, abdomen and back of arms. Your skin is gently body brushed, followed by a targeted sculpting massage to kick-start the micro-circulation, promoting a smoother silhouette and invigorating the entire body.

A cooling rubberised mask, rich in super-detoxing caffeine and green clay is applied to problem areas, whilst clinically proven Red Algae redefines areas prone to sagging. The result is a targeted body airbrush and skin that looks and feels intensely toned and refreshed.

..... 60 minutes | £68.00

## Elemis Back Ritual ★ New Treatment ★

Our backs are a hard-to-reach area and often get neglected. This bespoke Elemis back facial starts with an invigorating body brush and cleanse followed by a deep exfoliation and hydrating massage with Japanese Camellia oil blend. You will feel silky smooth and relaxed.

..... 40 minutes | £45.00



## GIFT VOUCHERS The Perfect Pressie!

Buy Pink Shed gift vouchers  
on our website or in the salon for any amount.  
Gift boxes are available to make the gift truly special.



---

## BODY SCRUB TREATMENTS | Buffed Beautiful

### Exotic Frangipani Body Scrub

Aromatic Tahitian Coconut and Frangipani flowers are soaked together to produce the monoi which is poured all over your body after a light body brushing. Feel your senses lifted and your body invigorated by the Frangipani salt glow. This deep exfoliation treatment leaves the skin drenched with moisture, for immediate softness, suppleness and radiance..... 30 minutes | £40.00

### Exotic Lime and Ginger Body Scrub

Invigorating deep cleanse. Feel your senses lifted and your body invigorated by the sublime exotic Lime and Ginger salt glow. Infused with skin enriching Japanese Camellia oil blend. After light body brushing, warm oil is drizzled luxuriously over the body skin is deeply cleansed, leaving it silky-smooth and glowing.....30 minutes | £40.00

---

## HOPI EAR CANDLING Perfectly clear

Thermal Auricular therapy also known as ear candling, helps to improve general health and well-being. It can also help relieve many other conditions such as: Sinus Problems, Compacted or excessive wax, Excessive ear wax, Hay fever, Sore Throats, Tension Headaches and Colds/flu. Hopi Ear Candling is a truly relaxing treatment with excellent results.

.....40 minutes | £38.00

## REFLEXOLOGY Helping Your Wellbeing

A foot massage can feel like heaven if you've been on your feet all day. However, Reflexology based on the Chinese principle that certain areas on the soles of your feet correspond to other parts of the body, also aims to improve organ function by massaging specific areas. Your feet are a map to the health of your entire body. This treatment can also be performed on hands if preferred.

.....50 minutes | £48.00

---

## PINK PACKAGES | Time For A Treat

### Mums Retreat

Treat your wife or mum to 3 hours of pure bliss. What better way to show you care. This package includes a 30 minute floating on the clouds massage, an Elemis taster facial, gel manicure and gel pedicure. Elemis aromatherapy oils are used to relax the lucky lady, followed by the facial using our wonderful Elemis facial products. Finished off with a Gel Bottle manicure and pedicure, they will be feeling top-to-toe beautiful and refreshed..... 3 hours | £145.00

### Baby Onboard

Enjoy this divine full body baby onboard massage to relieve all those aches created by growing your little one. Specifically adapted to work with your baby bump, our specially trained therapist will keep you relaxed and comfortable throughout. This is followed by our wonderful luxury Elemis Elite pedicure to give your feet and toes the attention they deserve...after all it's not always easy to reach those toes at the moment!..... 2 hours | £104.00

### Sleep Well

If you struggle with sleep or need some deep relaxation, this is the package for you. Drift away with a floating on the clouds full body and scalp massage followed by a reflexology session with one of our specially trained therapists. The combination of the two treatments will help you to drift off beautifully.....2 hours | £110.00

### Monthly bespoke packages- call us for more details or check online.

*Packages are restricted to the treatments listed in them and can't be exchanged for alternative treatments.*

*\*\*treatment prices may vary from listed if you would like the owner to do your treatment. Please contact reception for prices.*

**THE  
PINK SHED**  
BEAUTICIANS

**FIND US | Contact Us**

Book your treatments online at [www.thepinkshedbeauty.co.uk](http://www.thepinkshedbeauty.co.uk)  
or call us on **01473 515129**

The Pink Shed, 9 Court Farm, Brantham, CO11 1PW



**Opening times**

Monday	Closed
Tuesday	9am-8pm
Wednesday	9am-8pm
Thursday	9am-8pm
Friday	9am-8pm
Saturday	9am-5pm
Sunday	Closed

*24 hrs notice required for cancellations. You will be charged in full with less notice.  
Please note: if your appointment is longer than 2 hours we will require a £30 deposit.*



We care about the environment, our brochure is printed on FSC® Certified paper.

